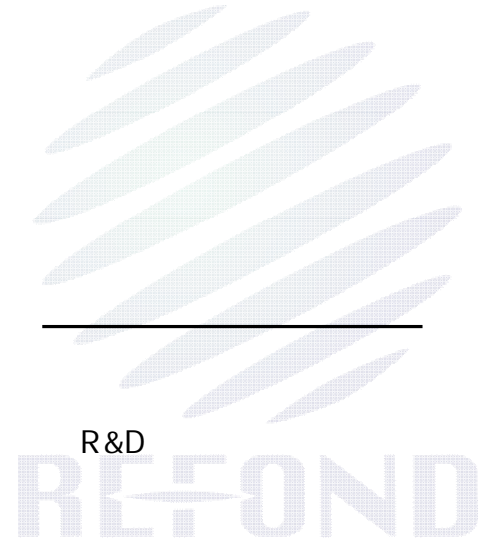
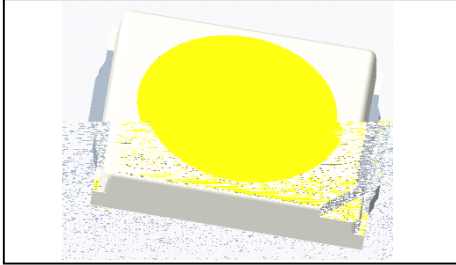


SPECIFICATION



1. Description

1.1



2.8mmX3.5mmX0.7mm

LED

2.8mmX3.5mmX0.7mm

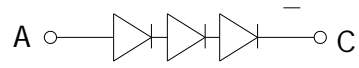
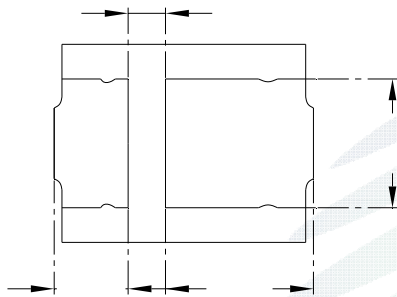
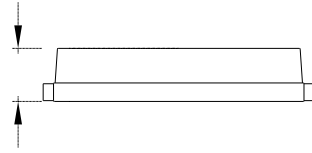
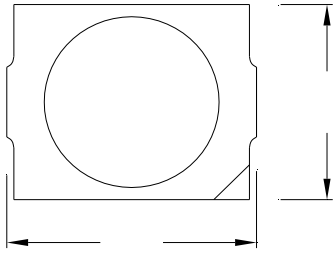
1.2 Features



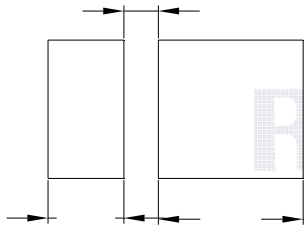
RoHS

1.3 Application

1.4 Package Dimension



Polarity
 A: anode
 C: cathode



1.

2.

±

±0.05

1.5 Product Parameters

REFOND

0.1ms, 1/10.

±0.1V.

0.005.

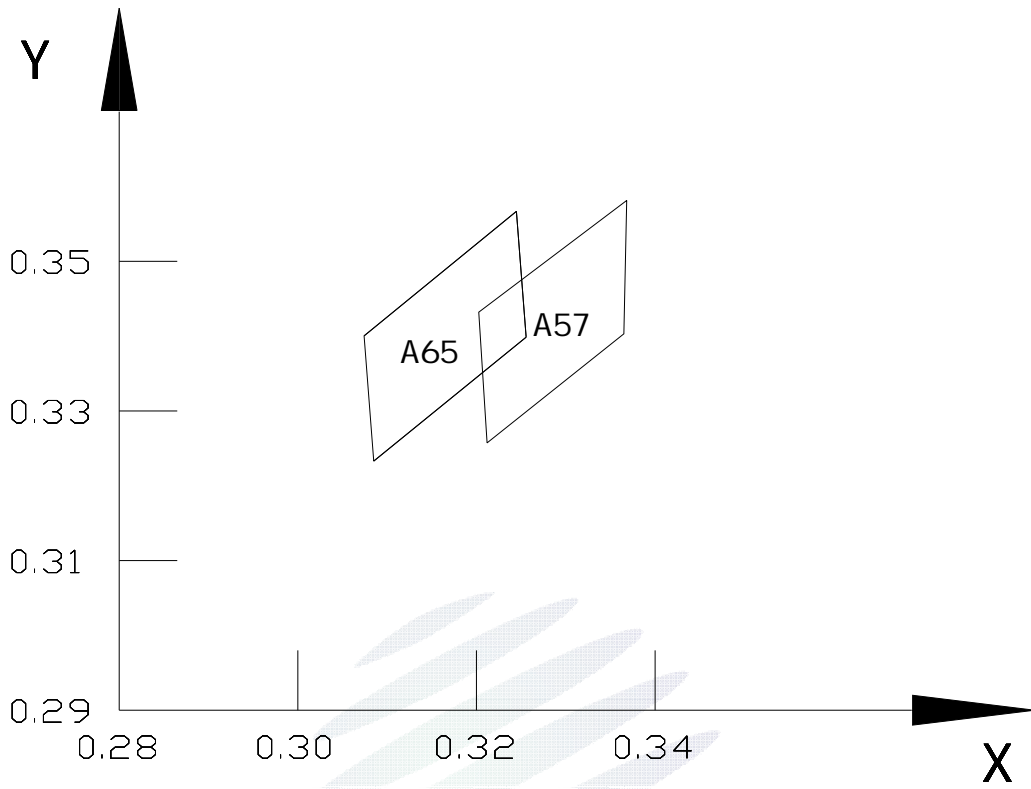
ESD2000V

. LED

90% LED

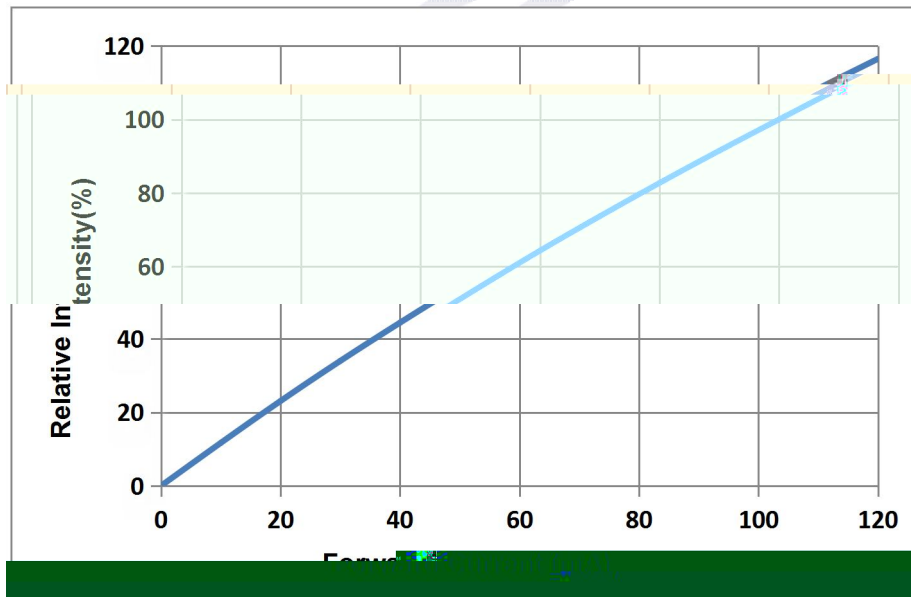
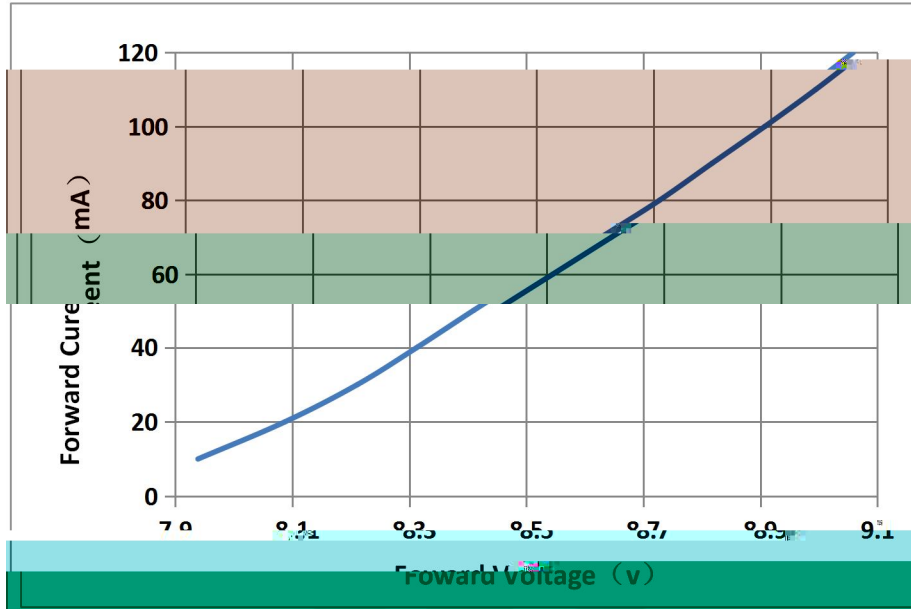
1.6 Bin Range Of Forward Voltage and Luminous Flux (IF=100mA)

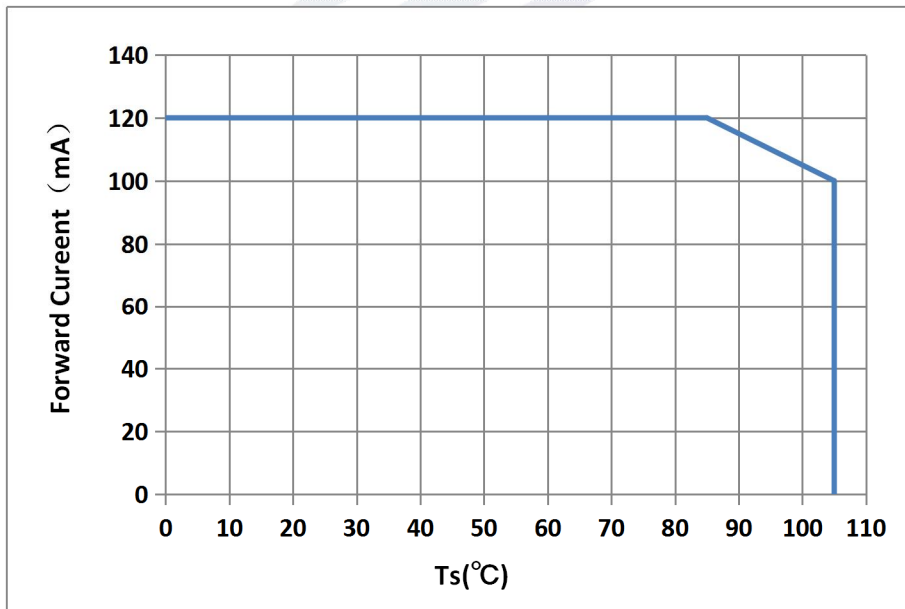
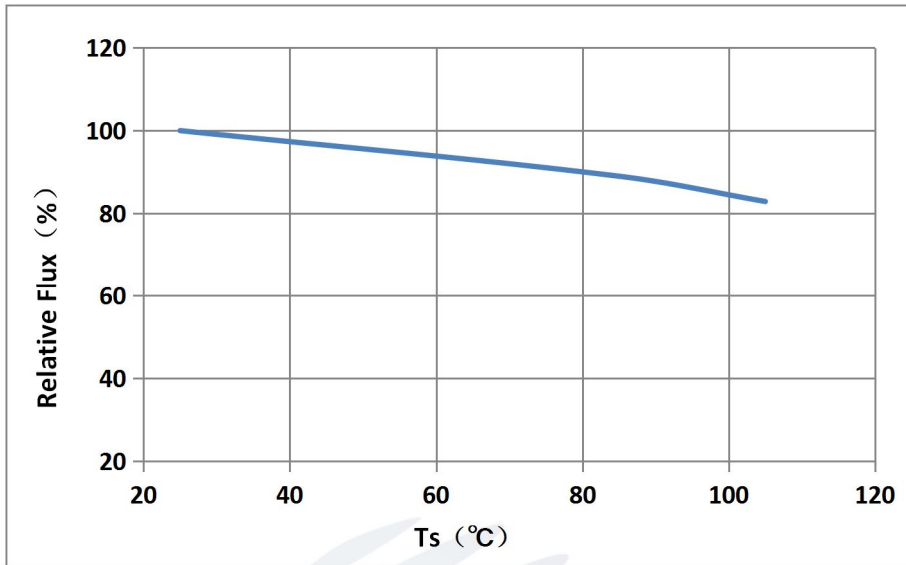
BIN (IF=100mA)

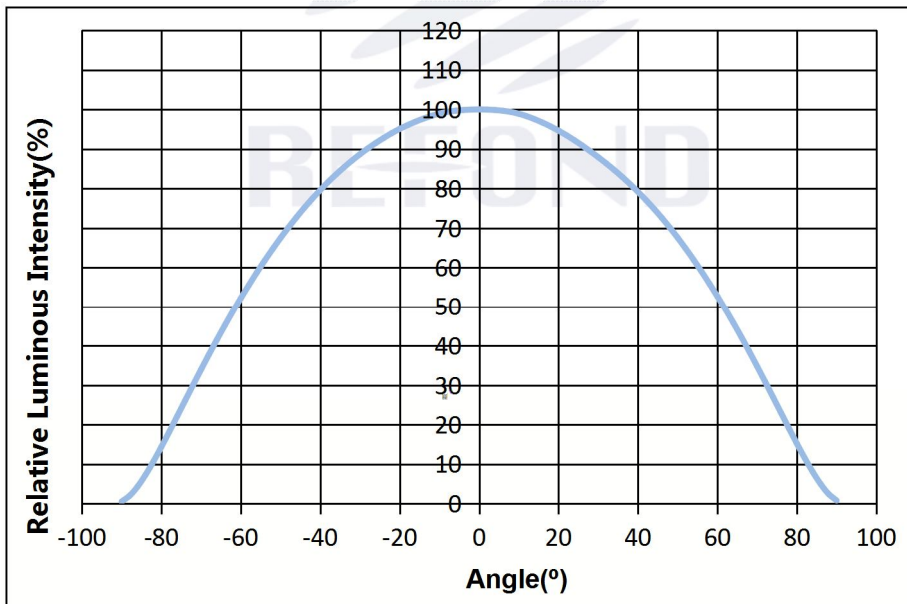
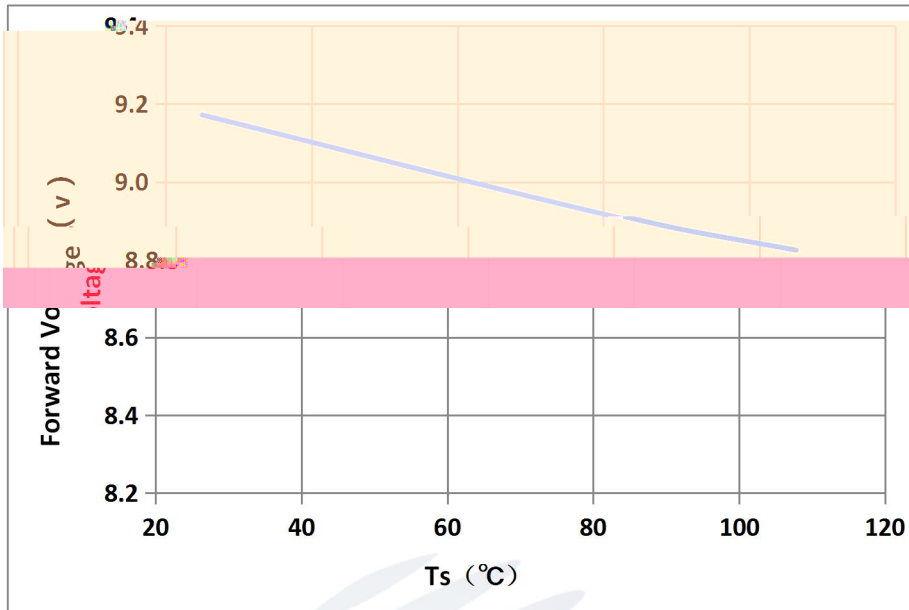


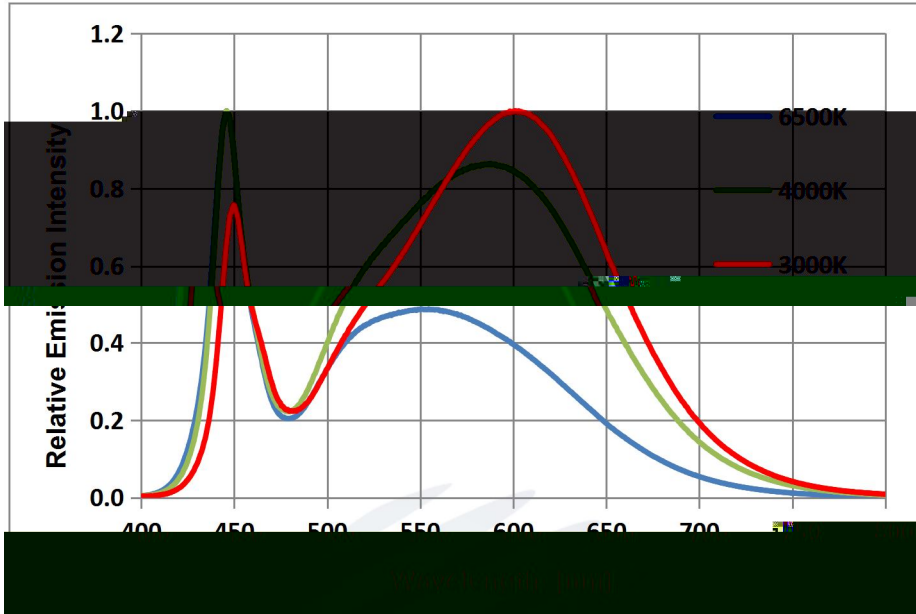
6-step								
BIN CODE	X1	Y1	X2	Y2	X3	Y3	X4	Y4

1.7 Typical optical characteristics curves









REFOND

2. Packaging

2.1 Packaging Specification

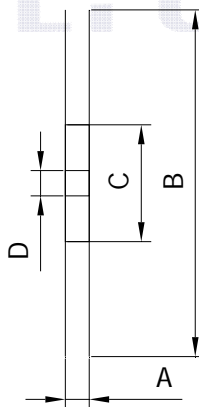
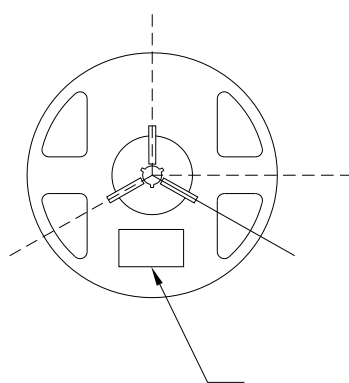
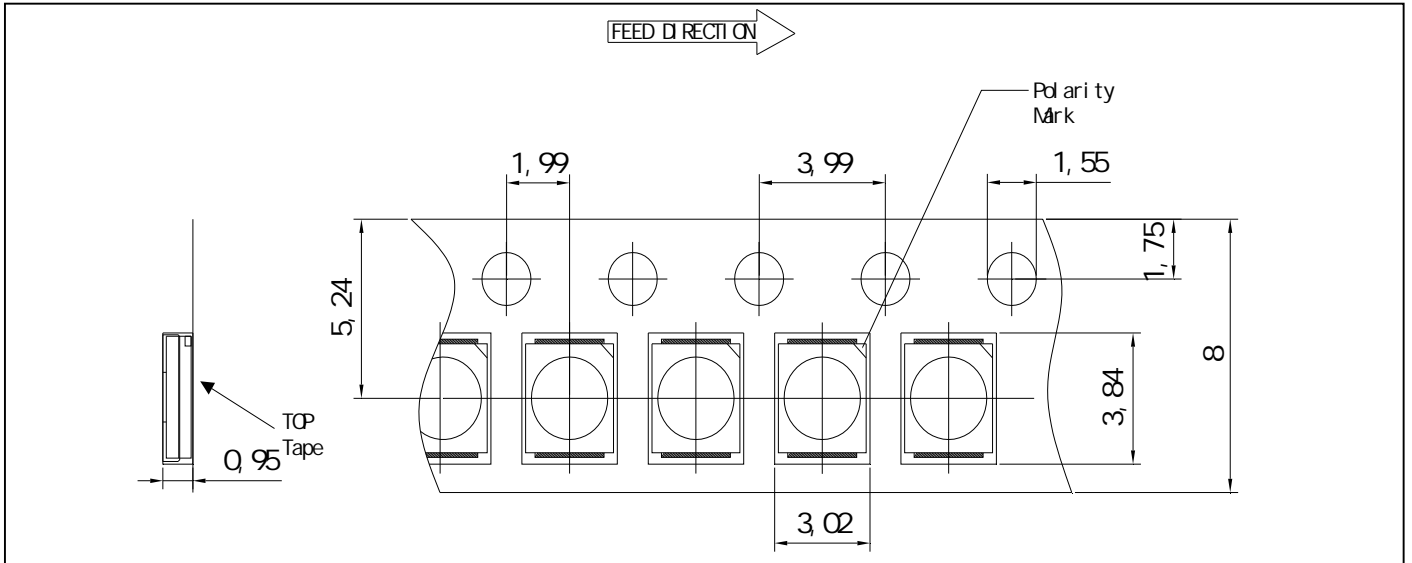


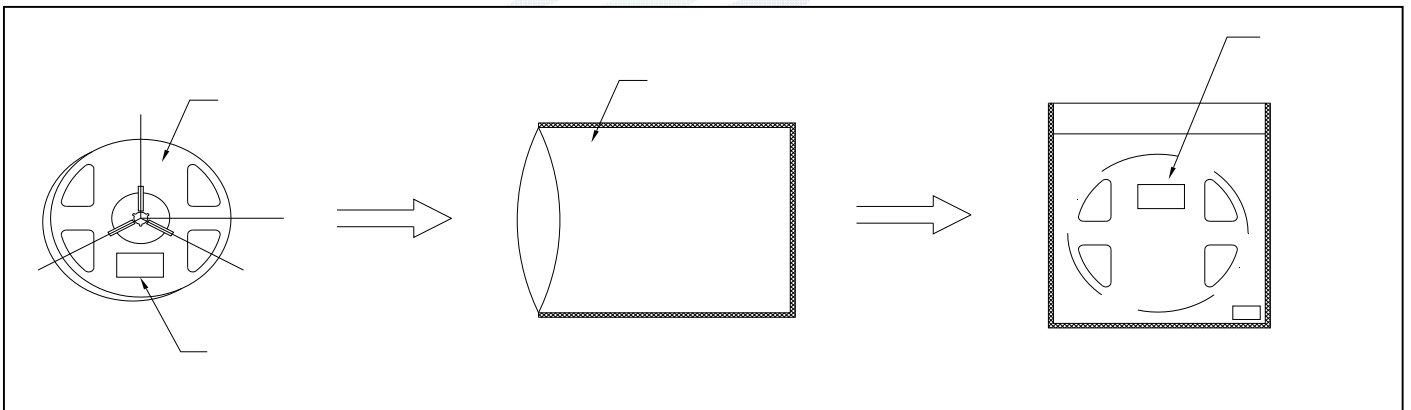
Table 2-1 Title

	±
	±
	±
	±

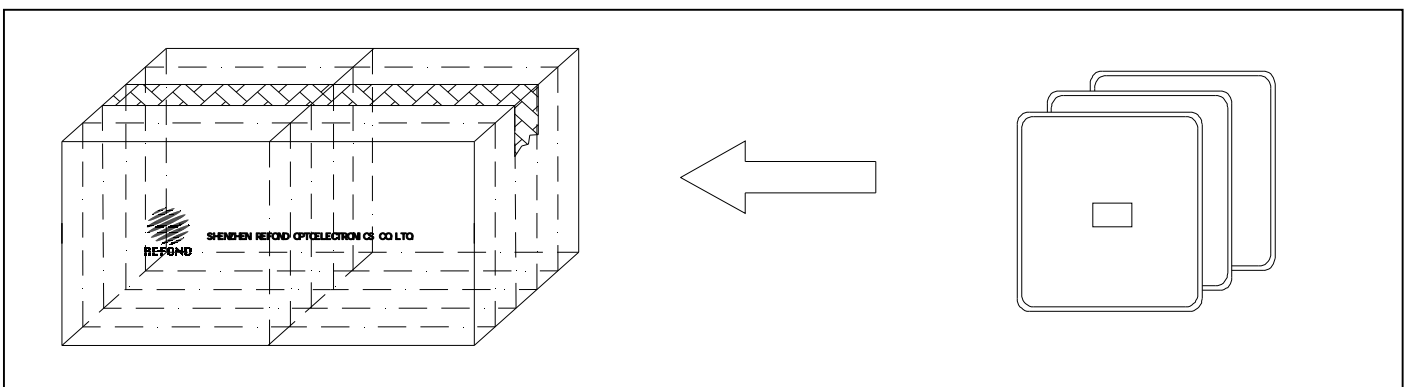
Table 2-2 Title

PART NO:		
SPEC NO:		
LOT NO		
BIN CODE:		
Φ:	XY:	
VF:	WLD:	
	QTY:	
	DATE:	

2.2 Moisture Resistant Packing



2.3 Cardboard Box



2.5 Criteria For Judging Damage

REFOND

LED

300 3

LED

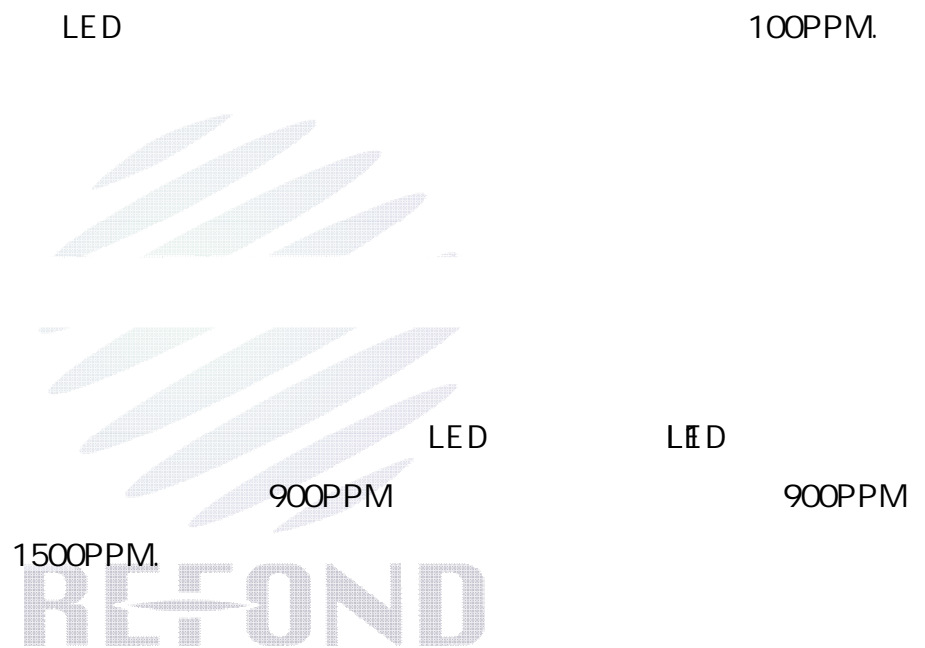


LED

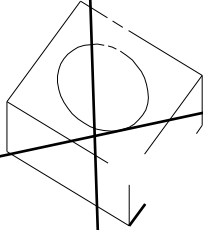
PCB

4. Handling Precautions

4.1 Handling Precautions



LED



LED

LED

RE-FOND

LED

LED

REFOND
60±5 24

LED

