

Radiant Source Model Report

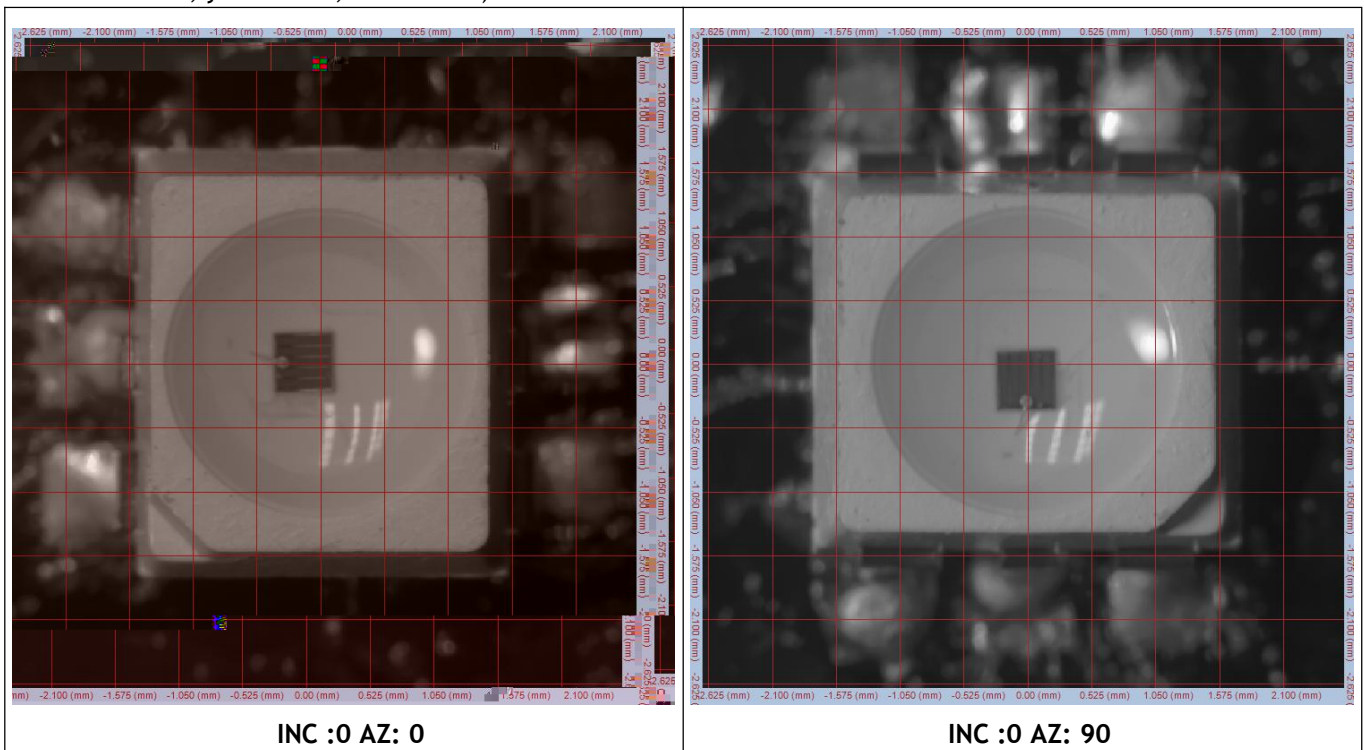


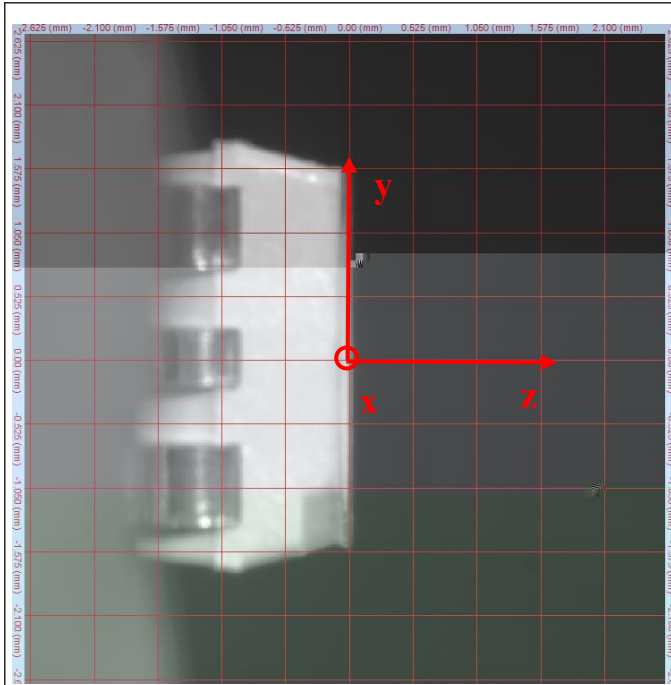
Source Description Product ID: Source Type: LED Model Number: RF-A4T35-R20E-R5 Serial Number: Manufacturer: REFOUD Source Description Notes:	Scan Environment measurement Type: Photometric SIG Orientation: SIG400/ Vertical Applied (volts): 2.30V Current Applied (amps): 150mA Watts Measured: 0.345W Cx: 0.6945 Cy: 0.3050 :27.99 lm Scan Results Date Scanned: 13-Jan-2024 Number of Measurements: 2736 Azimuth Range: 0 to 90, Step 5 Polar Range: 0 to 360, Step 5 Rated Lumens/Watts:81 lm/W
---	--

Test Origin Coordinate Chart

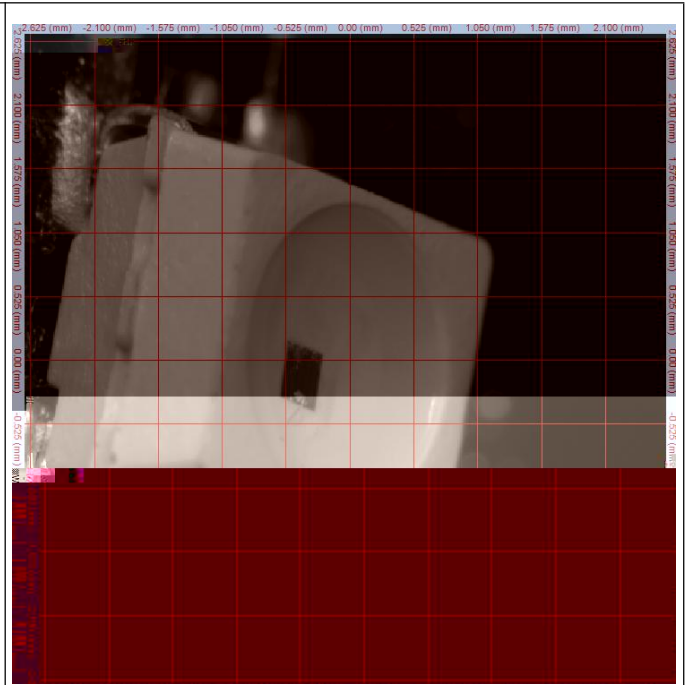
(The deviation of the position of the luminescent center relative to the center of the bracket.)

x=0.005mm, y=0.00 mm, z= 0.00mm)



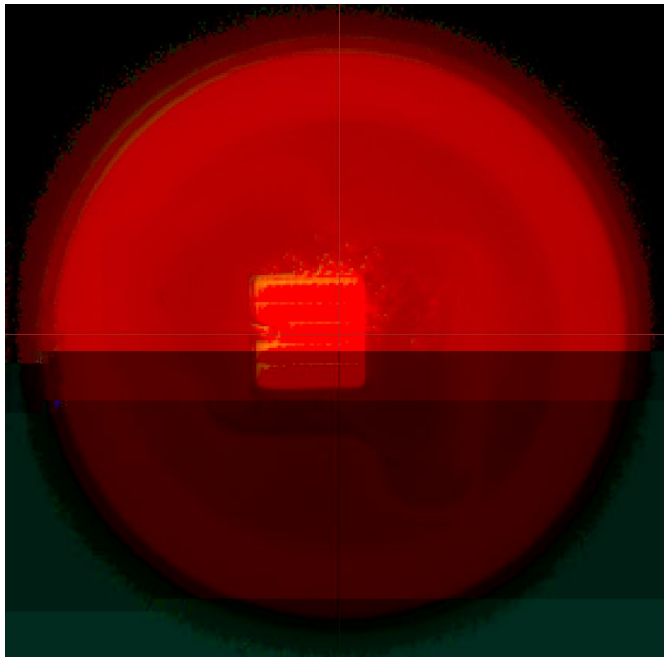


INC :90 AZ: 0

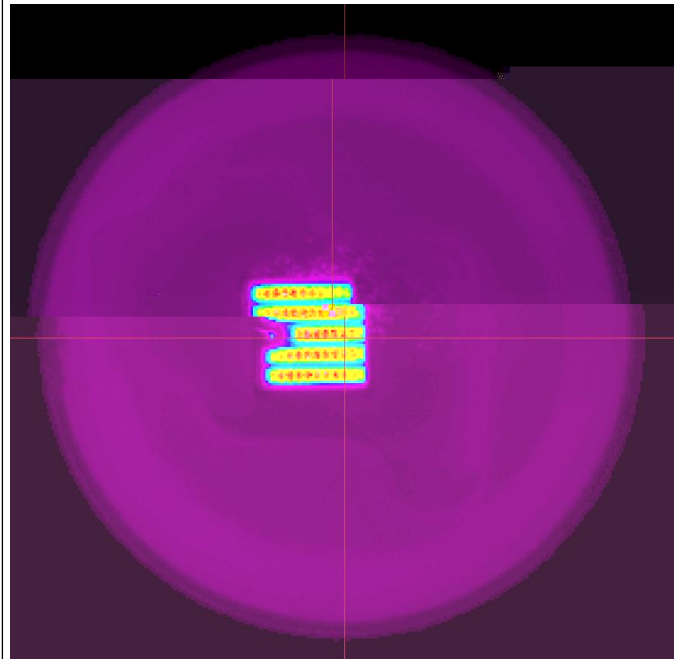


INC :50 AZ: 75

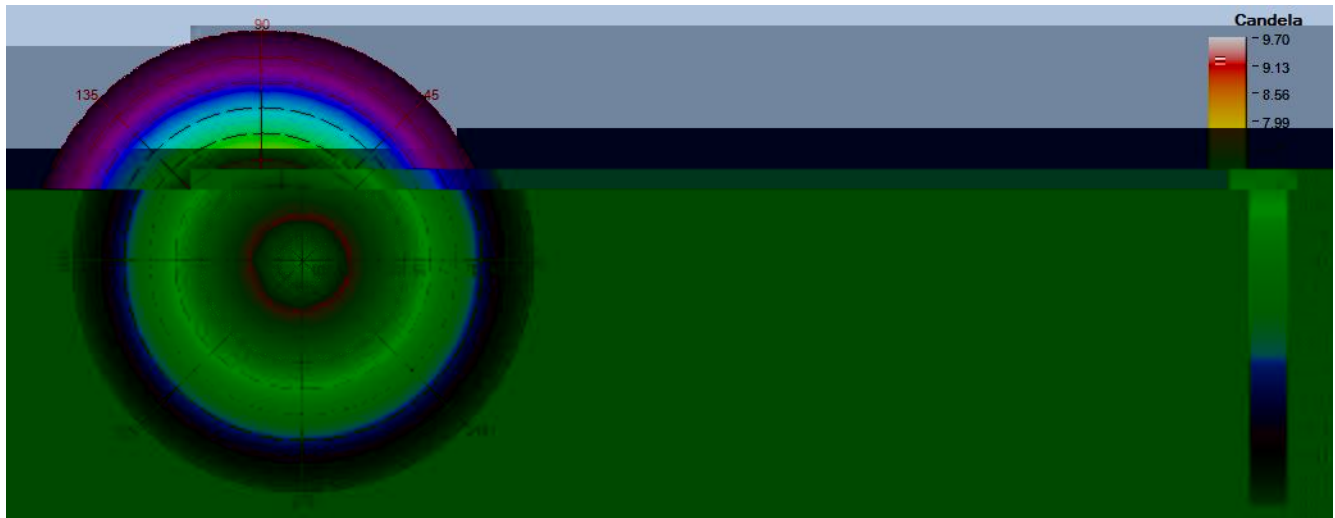
Top-View True Color Image



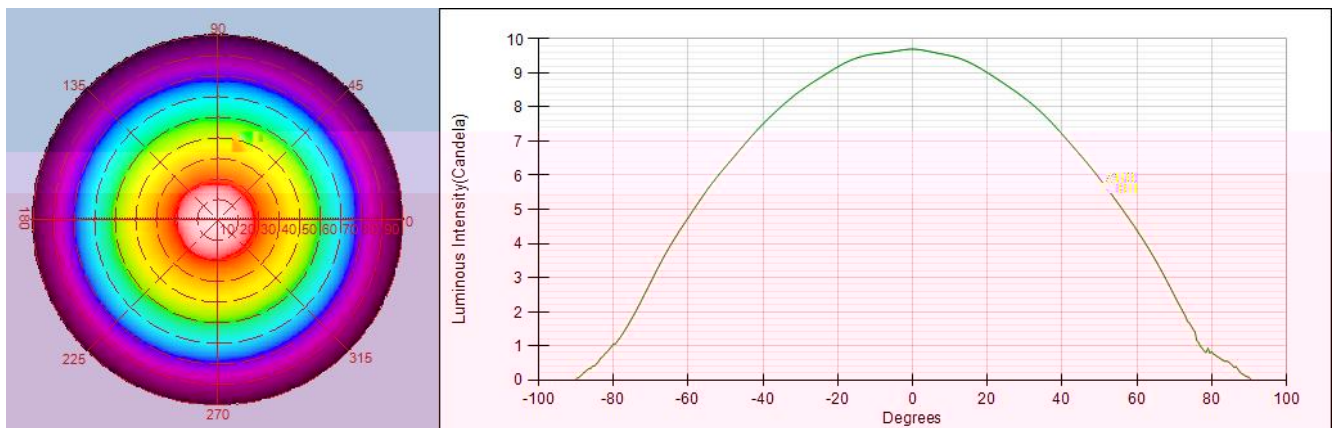
Top-View Luminance Image



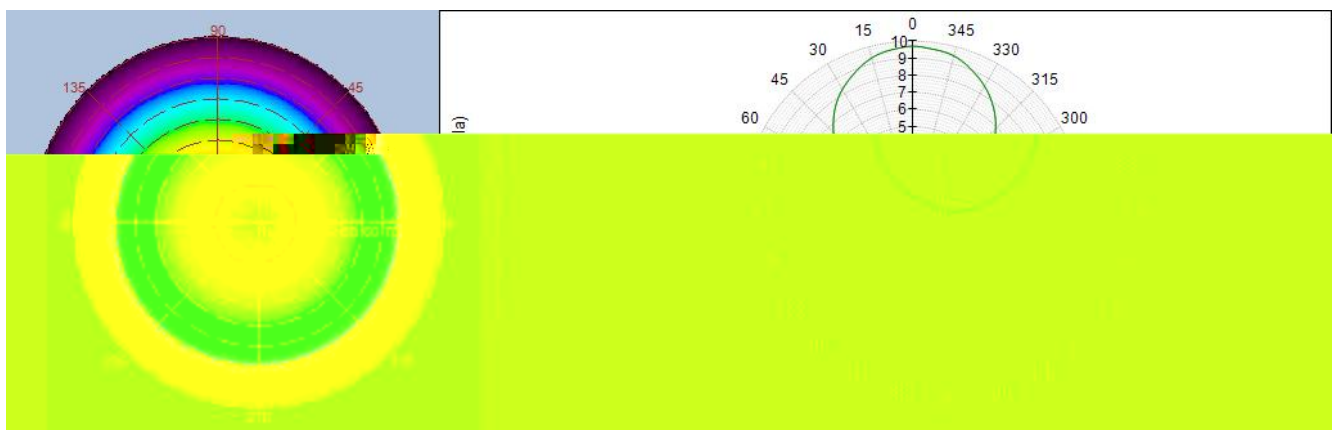
Intensity(traced to infinity)



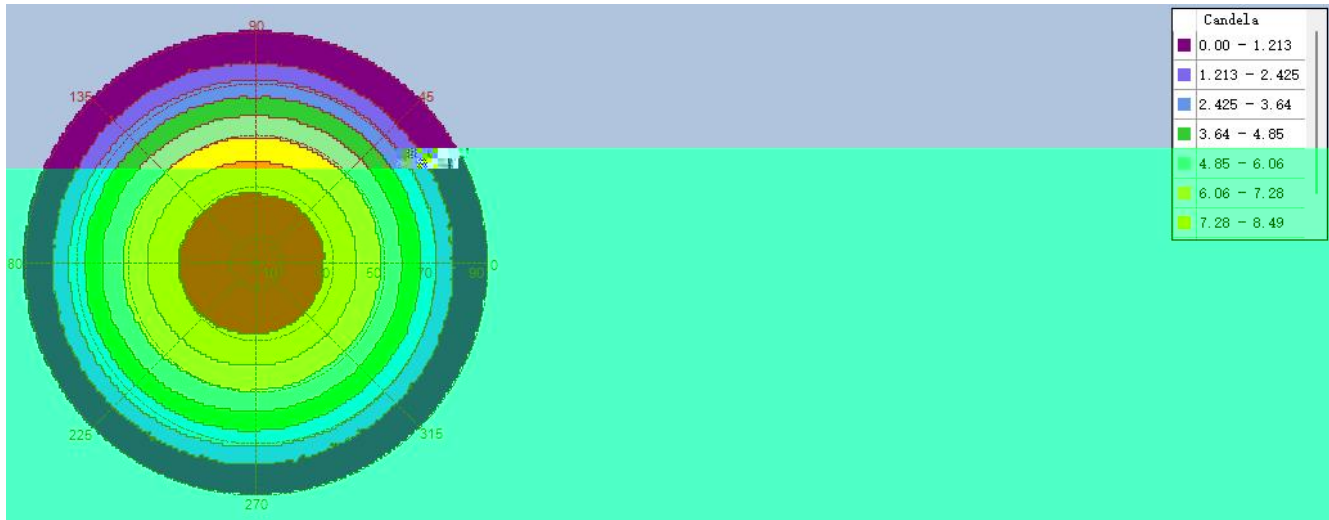
Intensity(traced to infinity) Cross Section Luminous Intensity(Candela)



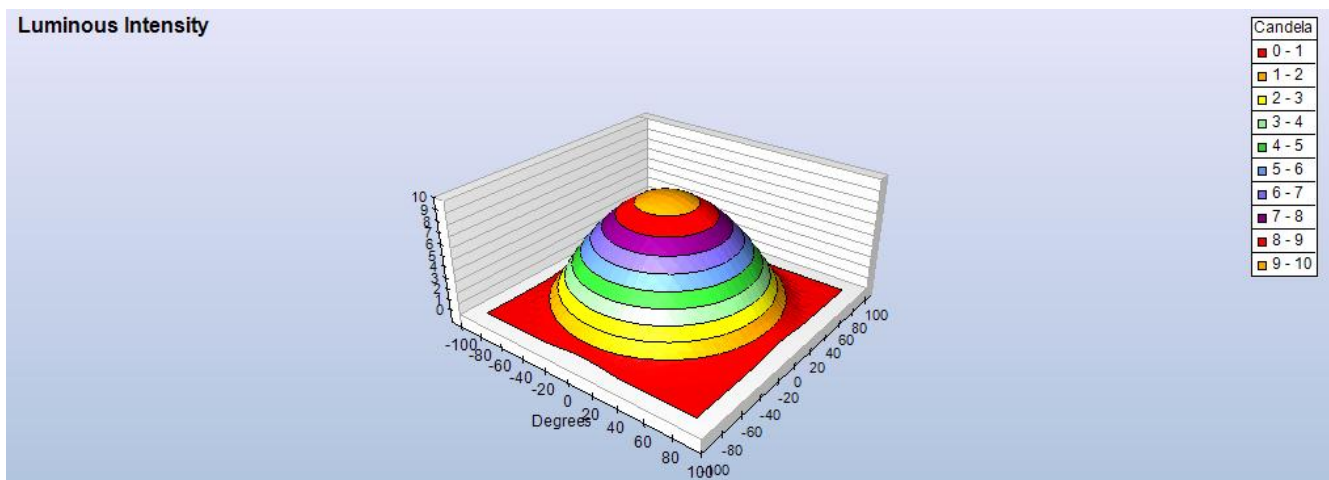
Intensity(traced to infinity) Cross Section Luminous Intensity(Candela)



Intensity(traced to infinity) Iso-Plot



Intensity(traced to infinity) 3D Iso-Plot

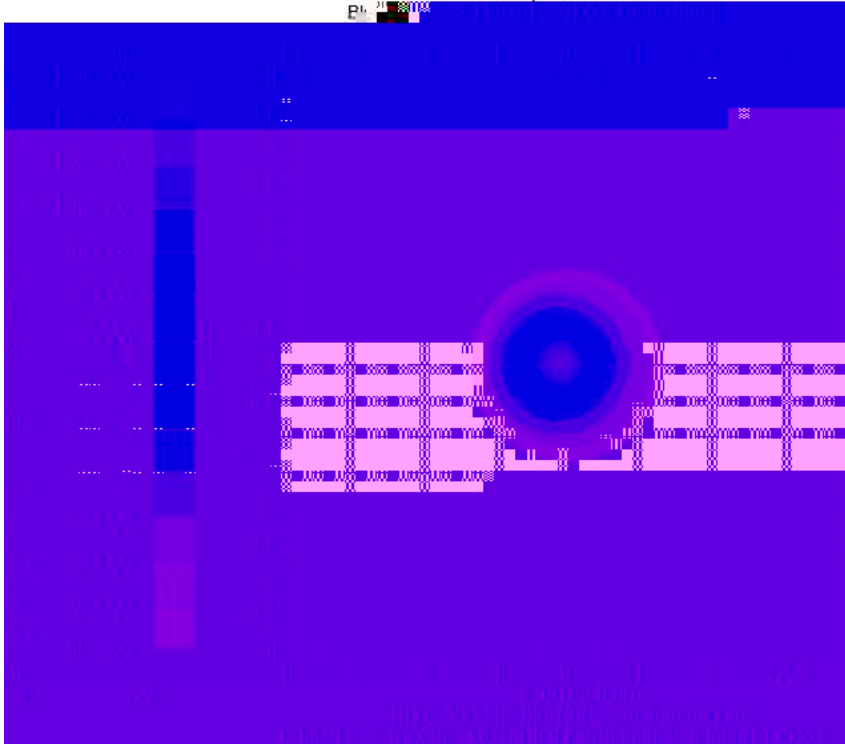


Illuminance Distribution Diagram

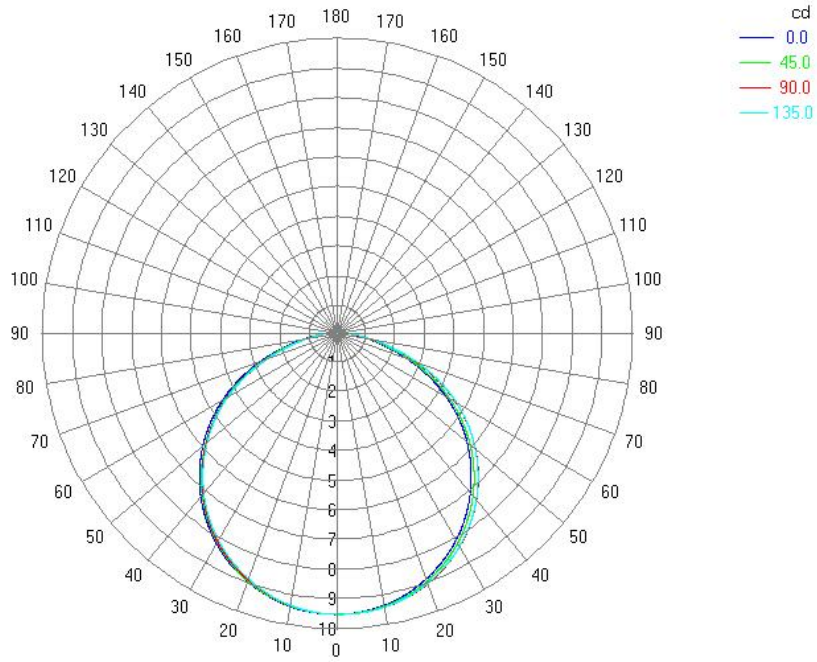


Illuminance Distribution Diagram

Total - Illuminance Map for Incident Flux
E_v 2.8703



Polar Candela Distribution Plot
Using Missed Rays



-----END-----