

# Radiant Source Model Report

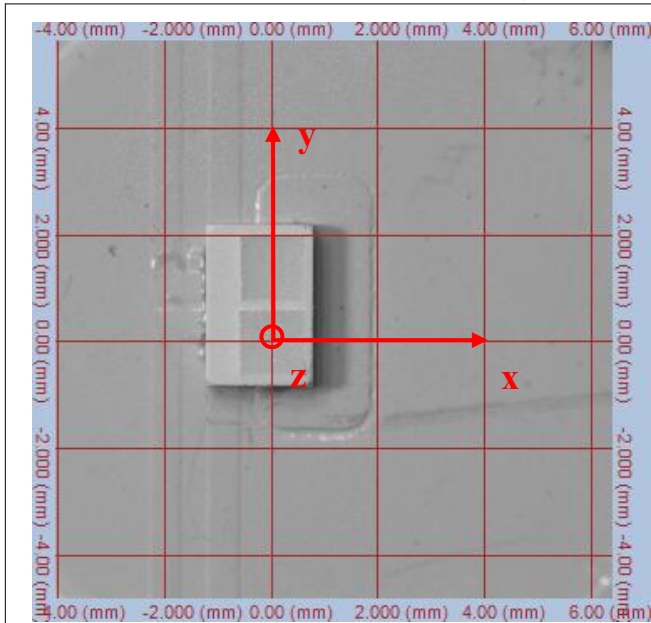


<p>P ID:</p> <p>S T : LED</p> <p>M N : 陶瓷3020 3W黄白双光_</p> <p>S N :</p> <p>M : S</p> <p>H B : 30</p> <p>M.R W (E- ):M.R L :</p> <p>T : P</p> <p>SIG O : SIG400: V V</p> <p>S D N :</p>	<p>A ( ): 3.14V</p> <p>C A ( ): 1000 A</p> <p>W M : 3.14W</p> <p>C : 0.5622 C : 0.4149 <math>\phi</math>:260.30</p> <p>D S : 11-S -2023</p> <p>N M : 2736</p> <p>A R : 0 90, S 5</p> <p>P R : 0 360, S 5</p> <p>R L /W :82.9 /W</p>
---	---

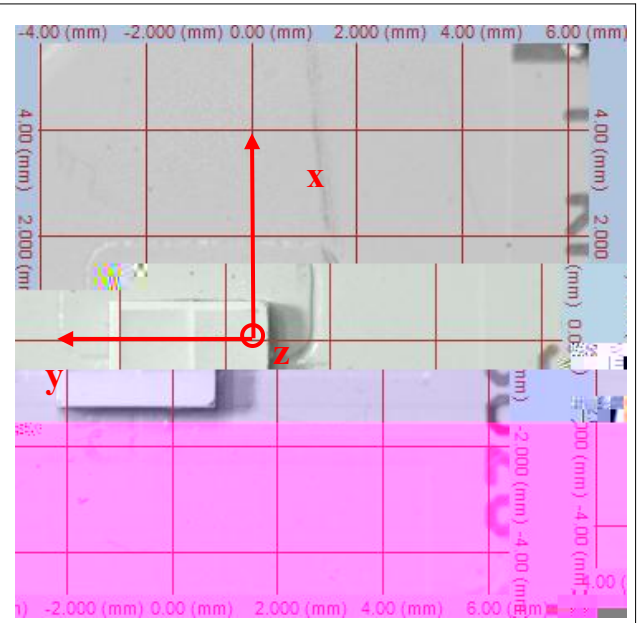
T O C C

(T

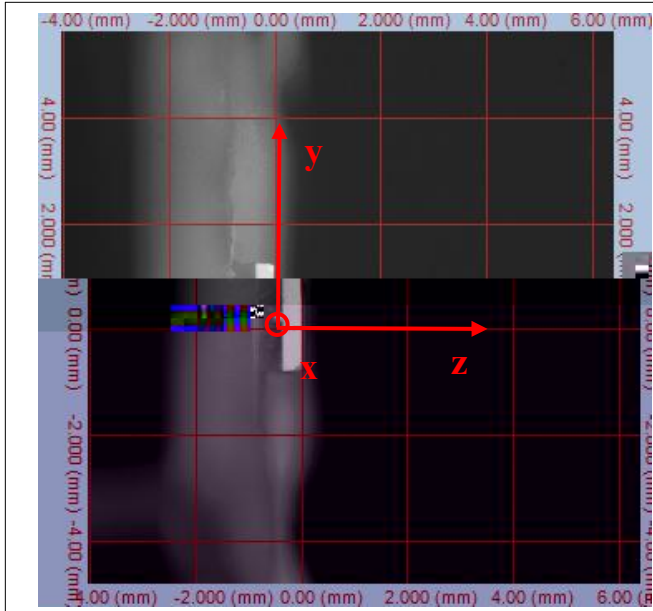
= 0.2565 , =-0.708 , = 0.00 )



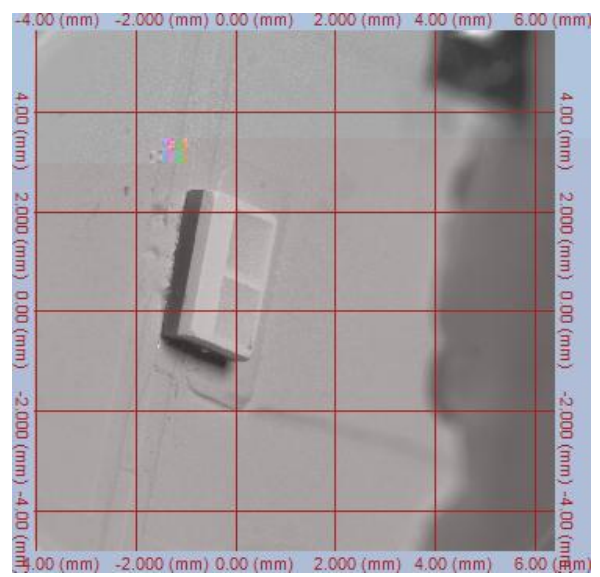
INC :0 A : 0



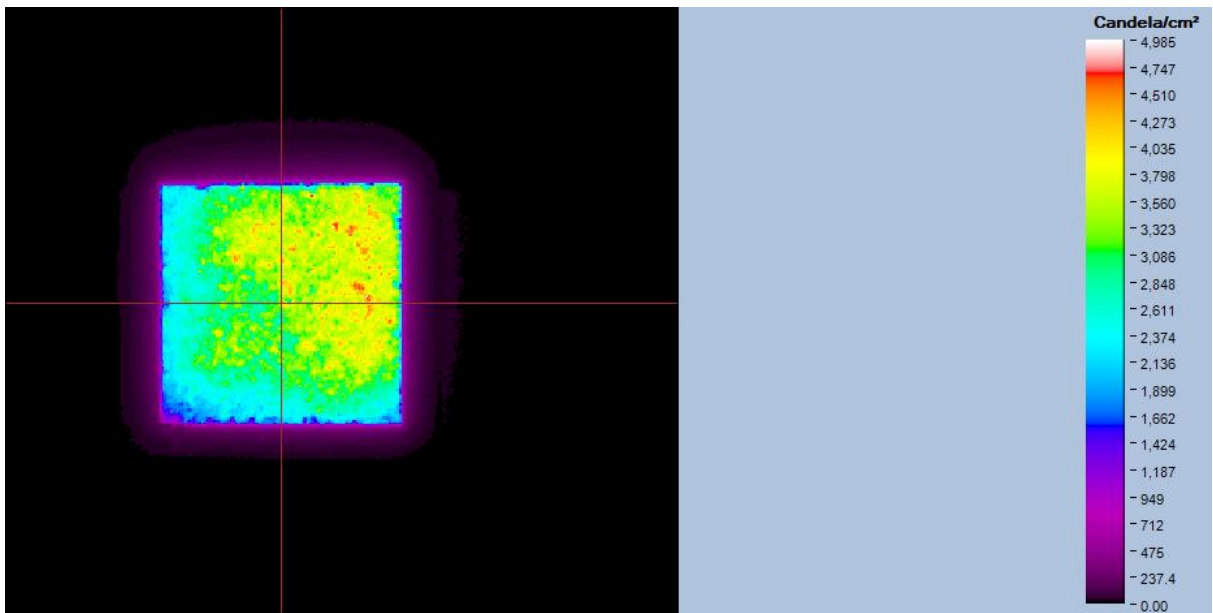
INC :0 A : 90

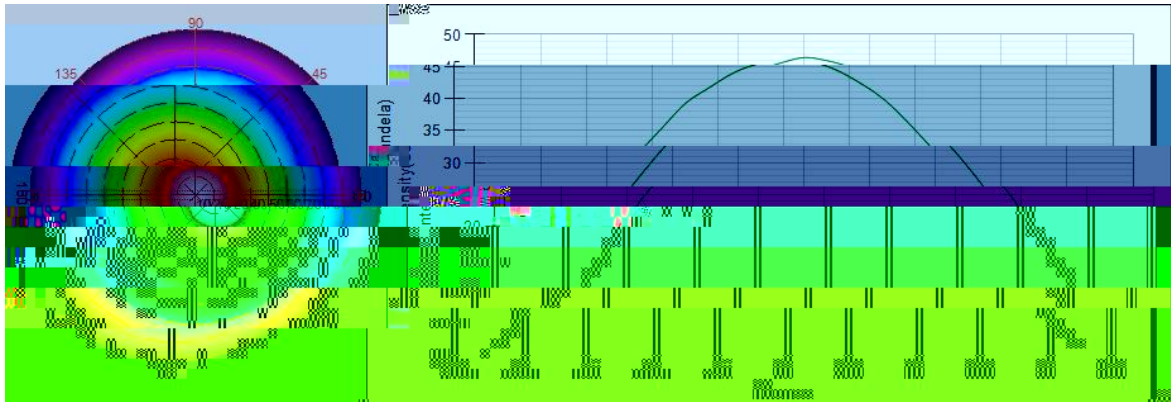
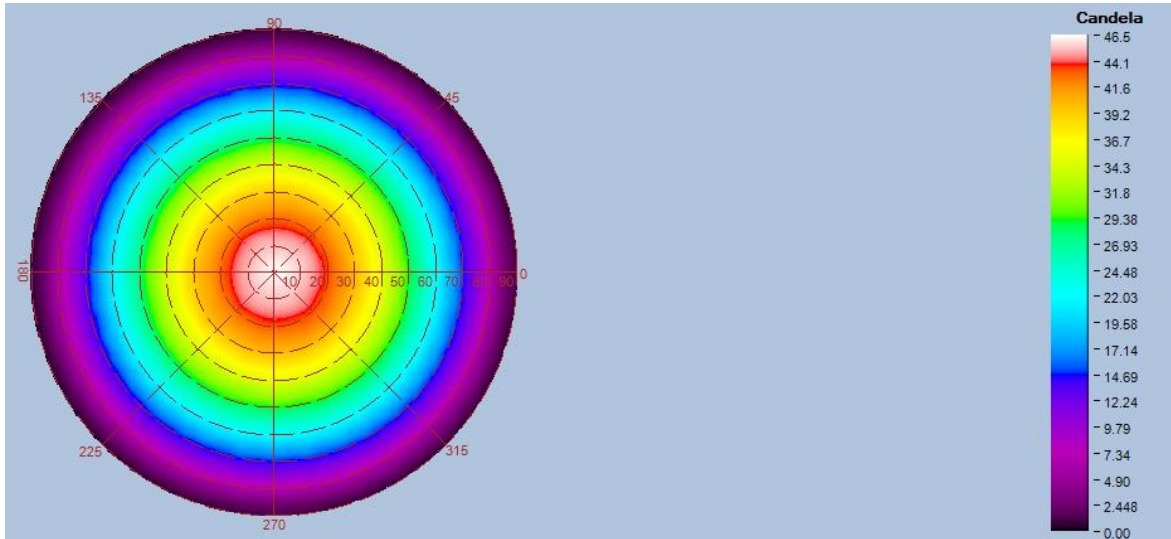


INC :90 A : 0

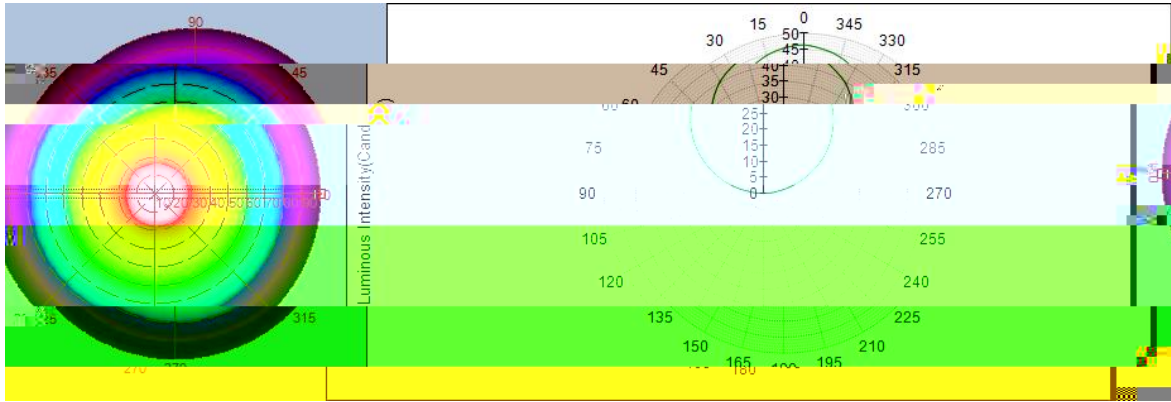


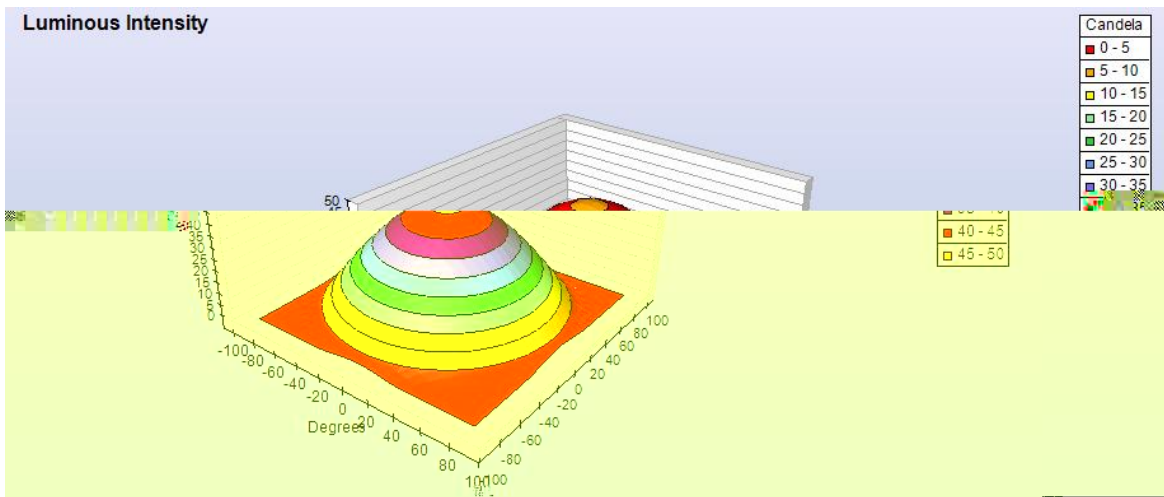
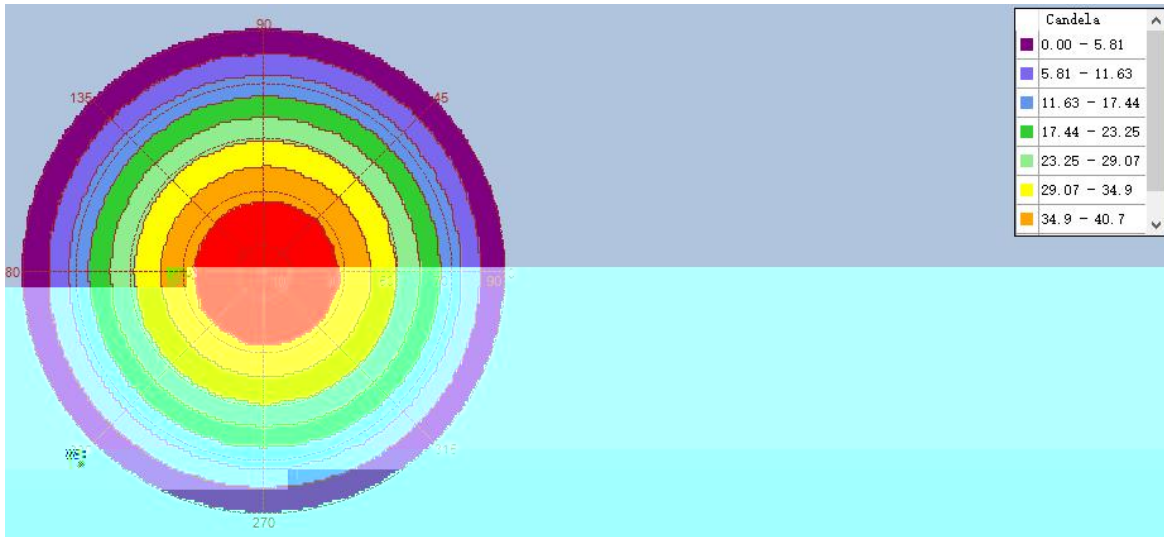
INC :50 A : 75





Intensity(traced to infinity) Cross Section Luminous Intensity(Candela)





-END-