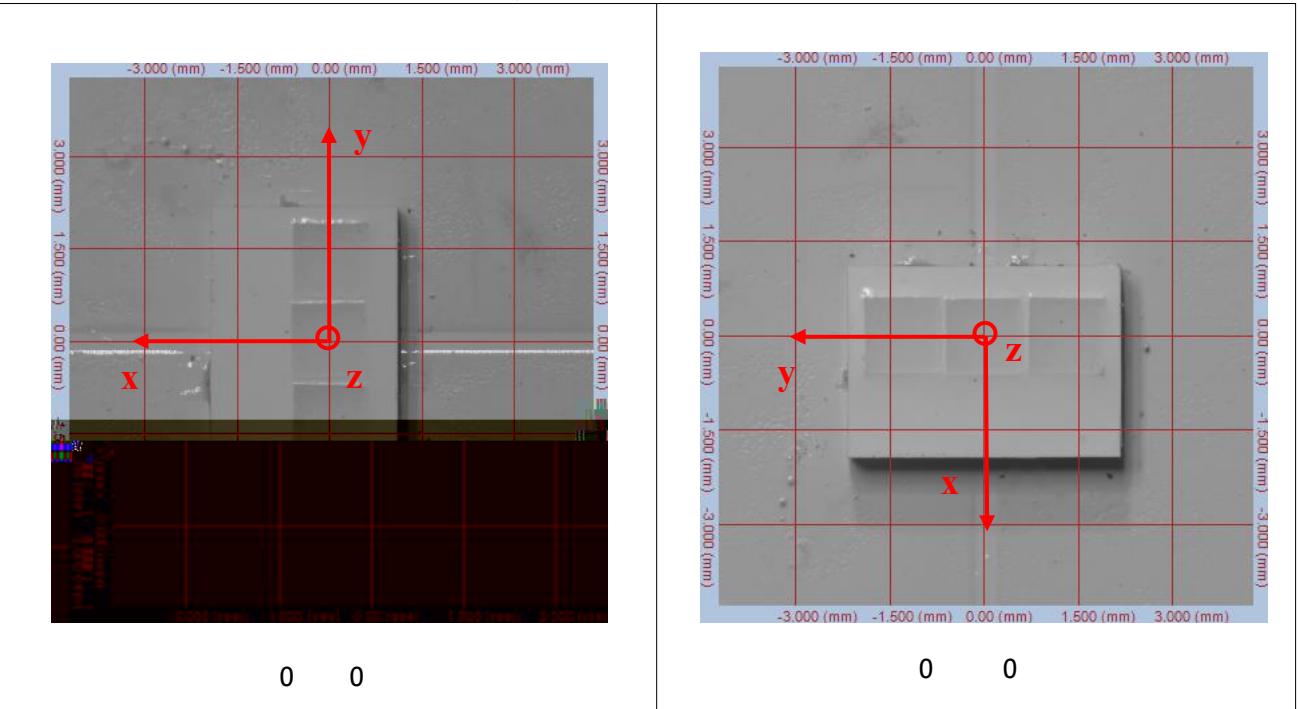


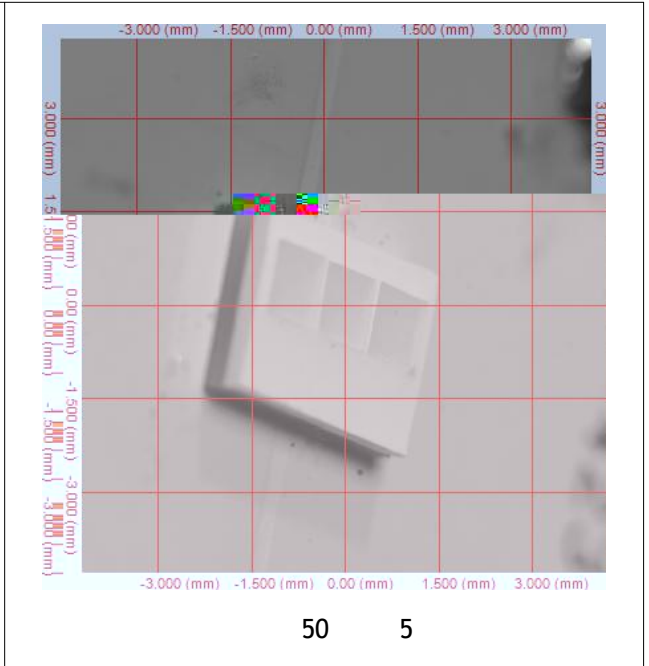
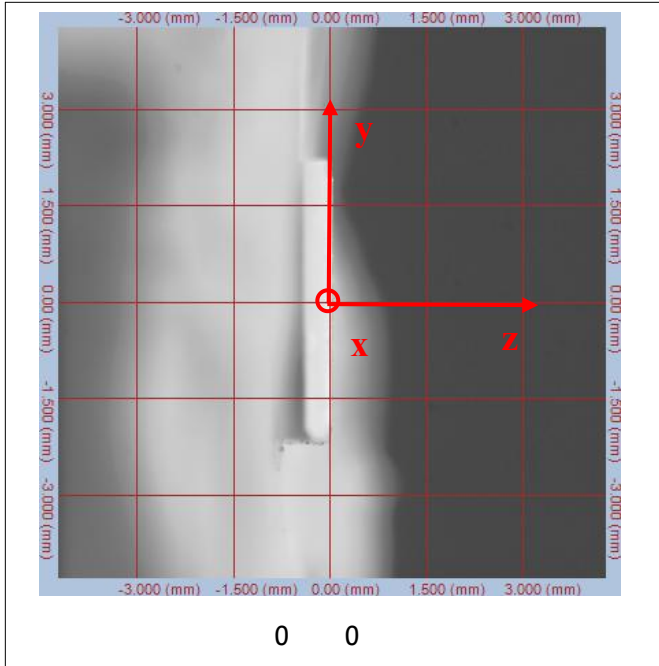
Radiant Source Model Report



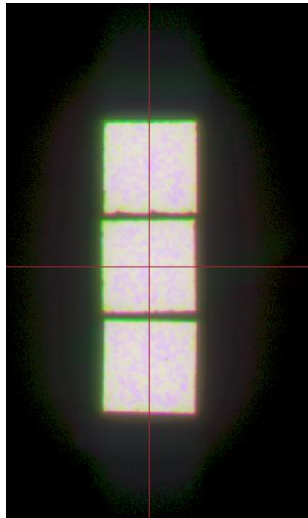
| Source Description | Scan Environment |
|--------------------|--|
| RF-A3H30-W60P | () .5 () 1000 |
| 30 (-) . | 0.32 0.34 4 1 |
| 400 | Scan Results |
| | 13- 2023 0 0, 5 0 3 0, 5 / 151. / |

(0.415 , -0.0105 , 0.00)

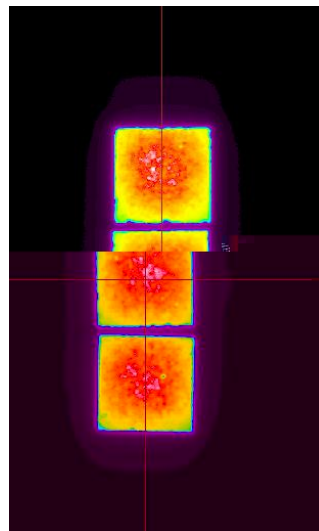




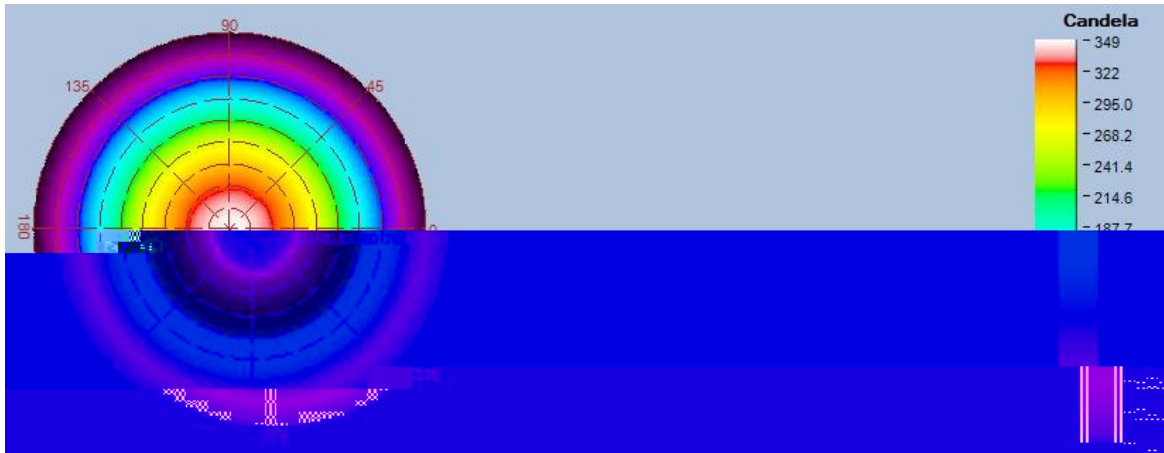
Top-View True Color Image



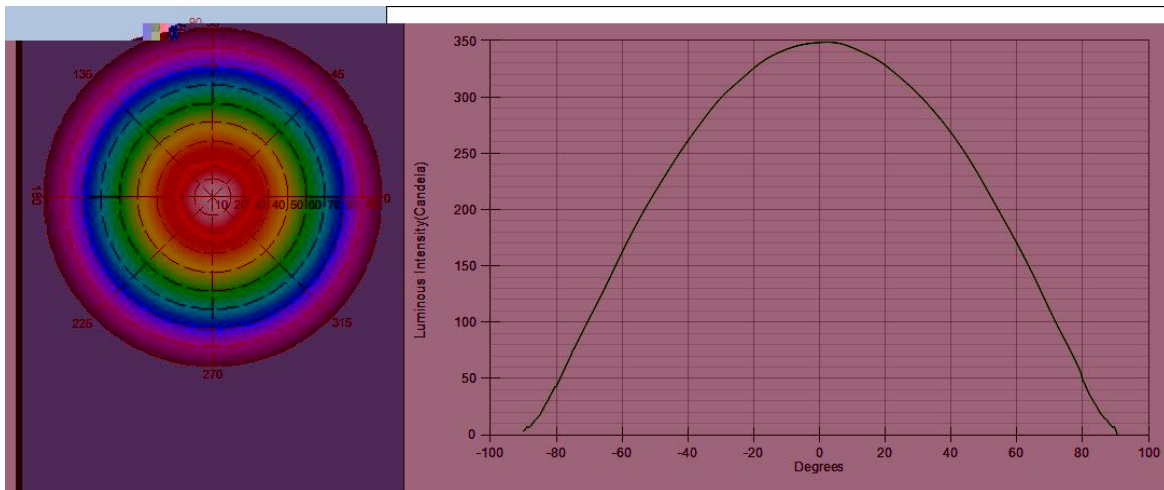
Top-View Luminance Image



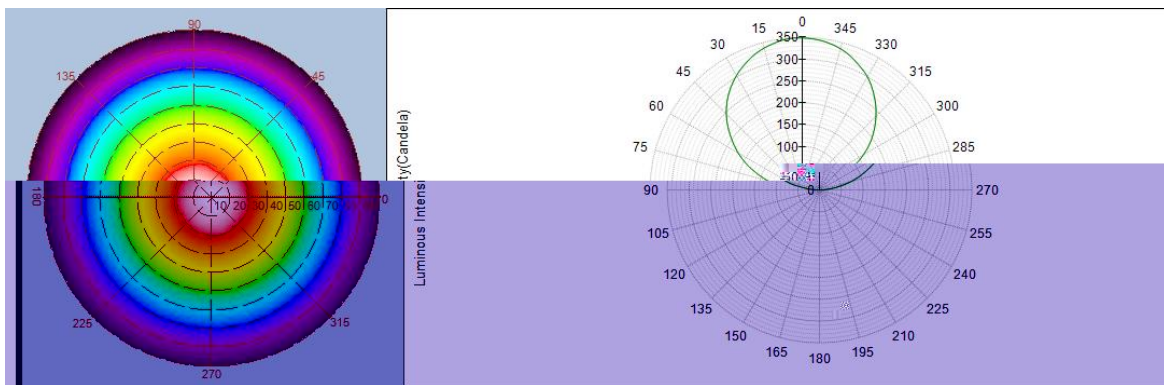
Near Field Radar Bitmap



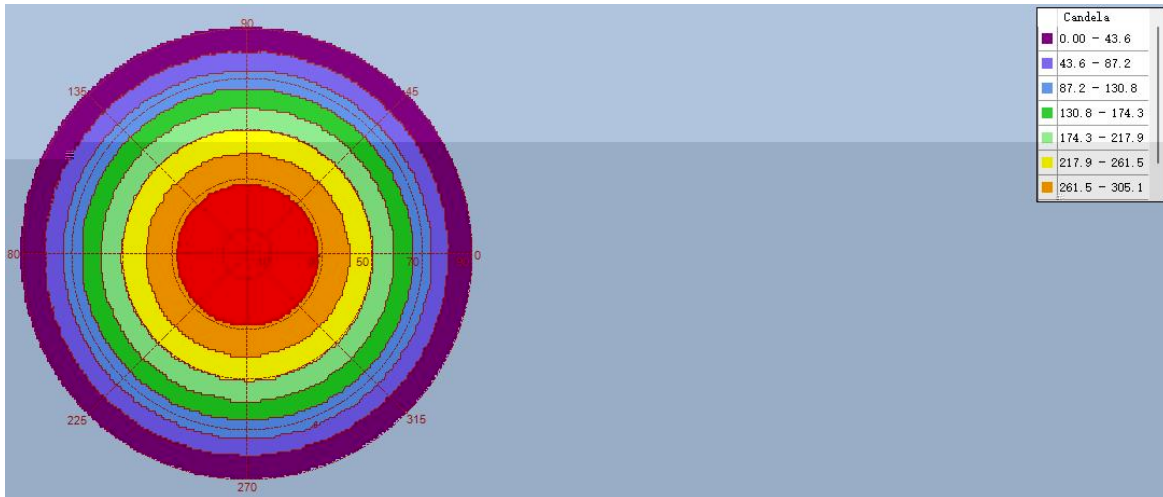
Intensity(traced to infinity) Cross Section Luminous Intensity(Candela)



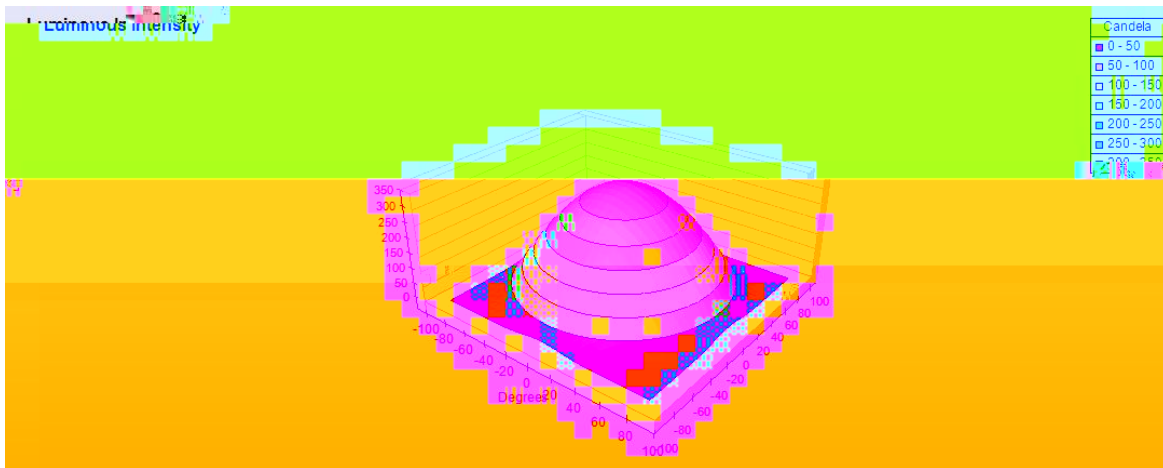
Intensity(traced to infinity) Cross Section Luminous Intensity(Candela)



Intensity(traced to infinity) Iso-Plot



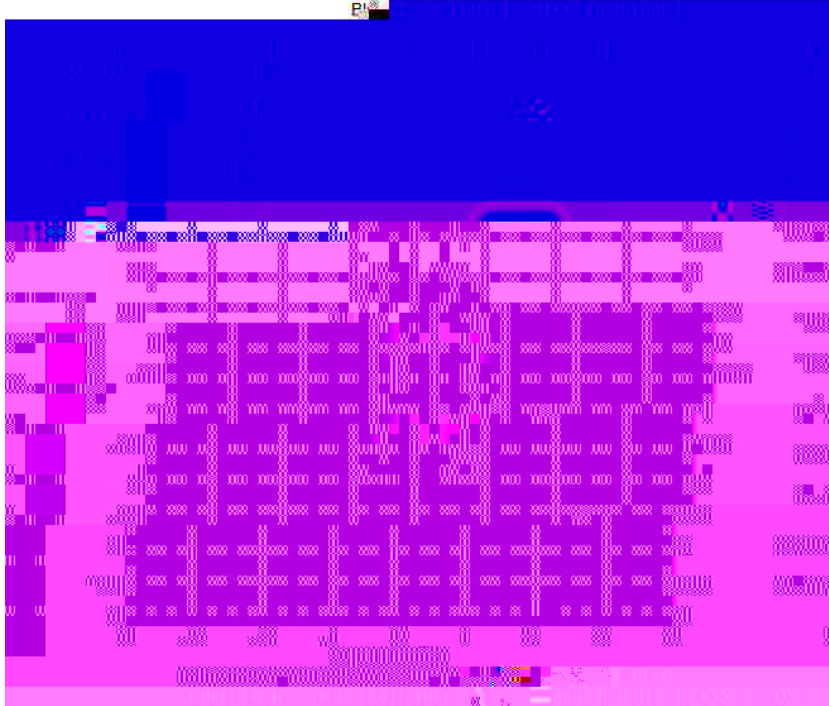
Intensity(traced to infinity) 3D Iso-Plot



Illuminance Distribution Diagram

| | | | |
|--|--|--|--|
| | | | |
| | | | |
| | | | |

Total - Illuminance Map for Incident Flux



Polar Candela Distribution Plot
Using Missed Rays

