

# Radiant Source Model Report

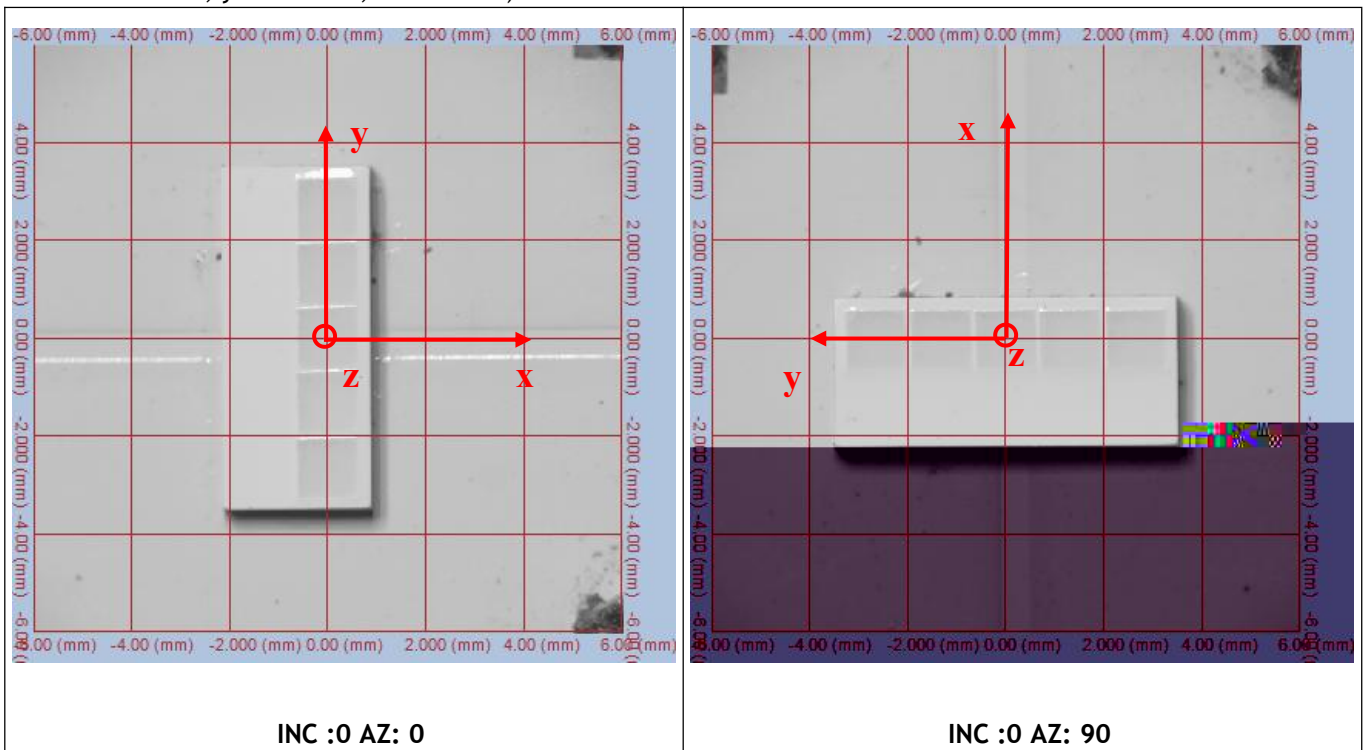


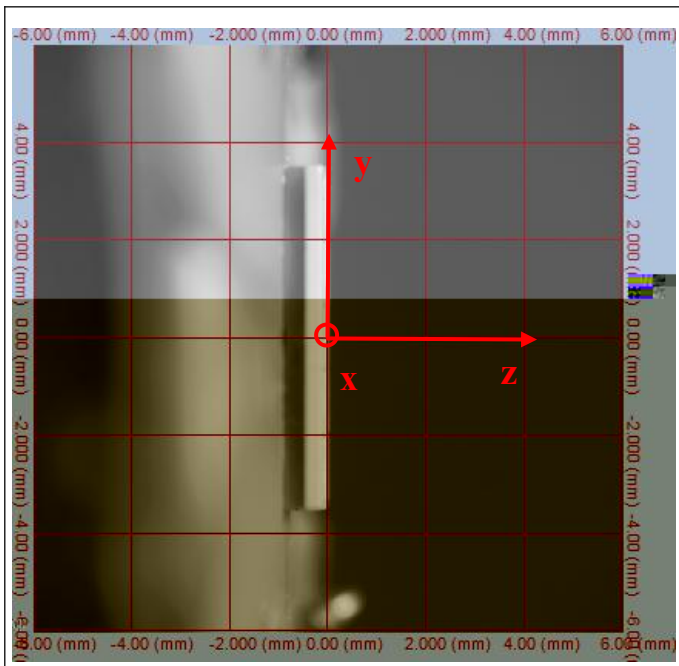
<b>Source Description</b> Product ID: Source Type: LED Model Number: RF-A4H50-W60P Serial Number: Manufacturer: REFOUD  Source Description Notes:	<b>Scan Environment</b> measurement Type: Photometric SIG Orientation: SIG400/ Vertical Applied (volts):15.3V Current Applied (amps): 1000mA Watts Measured:15.3W Cx: 0.3168 Cy: 0.3326 :1960 lm  <b>Scan Results</b> Date Scanned: 23-July-2022 Number of Measurements: 2736 Azimuth Range: 0 to 90, Step 5 Polar Range: 0 to 360, Step 5 Rated Lumens/Watts:128.1 lm/W
--	---

## Test Origin Coordinate Chart

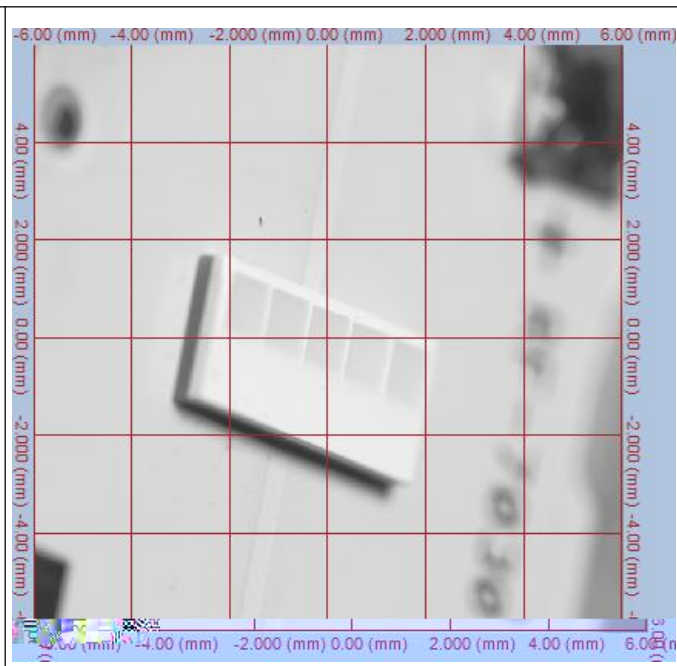
(The deviation of the position of the luminescent center relative to the center of the bracket.)

X=0.6605mm, y=-0.01 mm, z= 0.00mm)



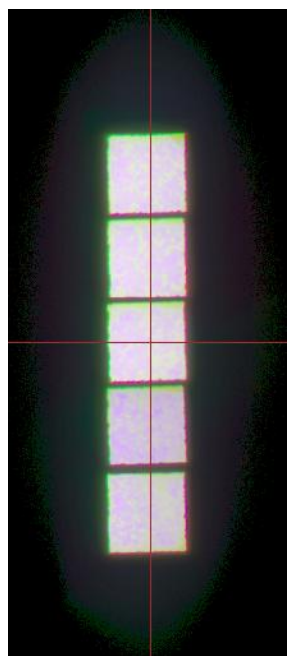


INC :90 AZ: 0

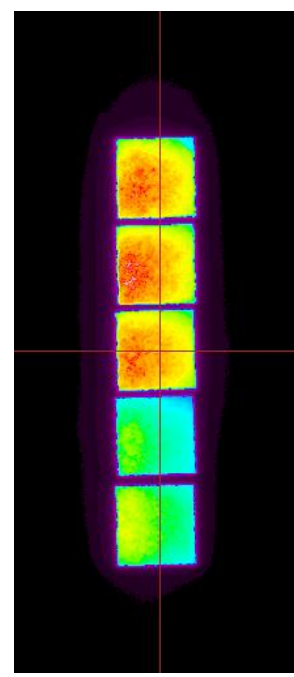


INC :50 AZ: 75

Top-View True Color Image



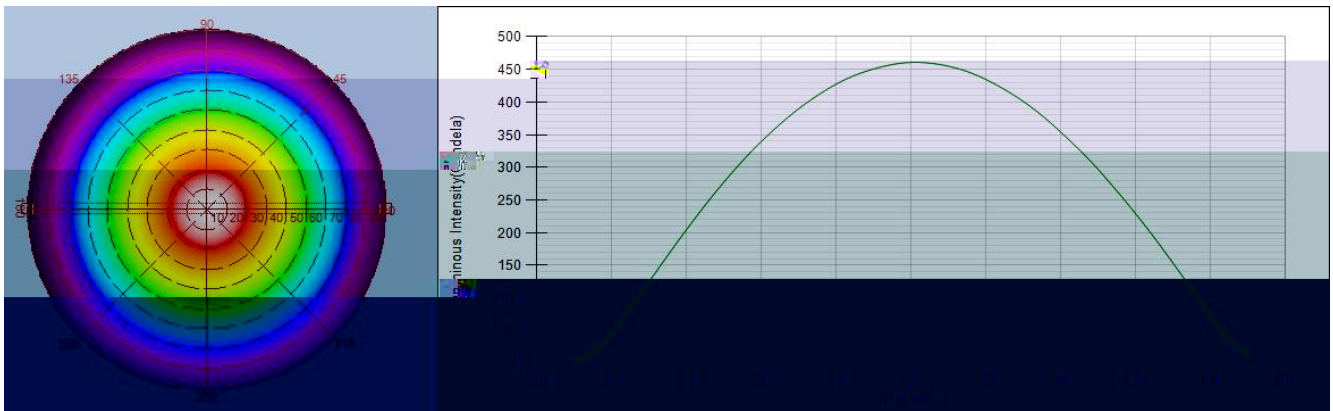
Top-View Luminance Image



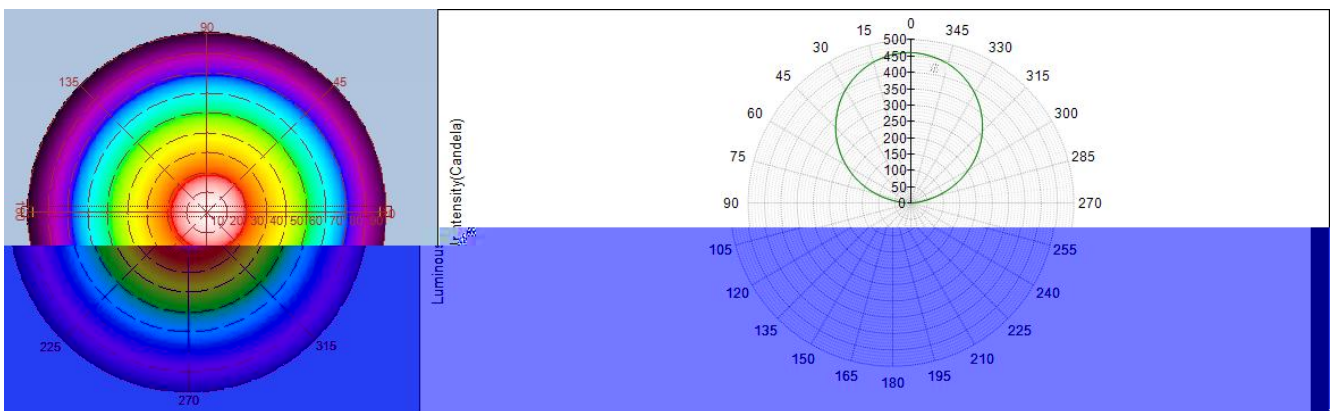
**Intensity(traced to infinity)**



**Intensity(traced to infinity) Cross Section Luminous Intensity(Candela)**



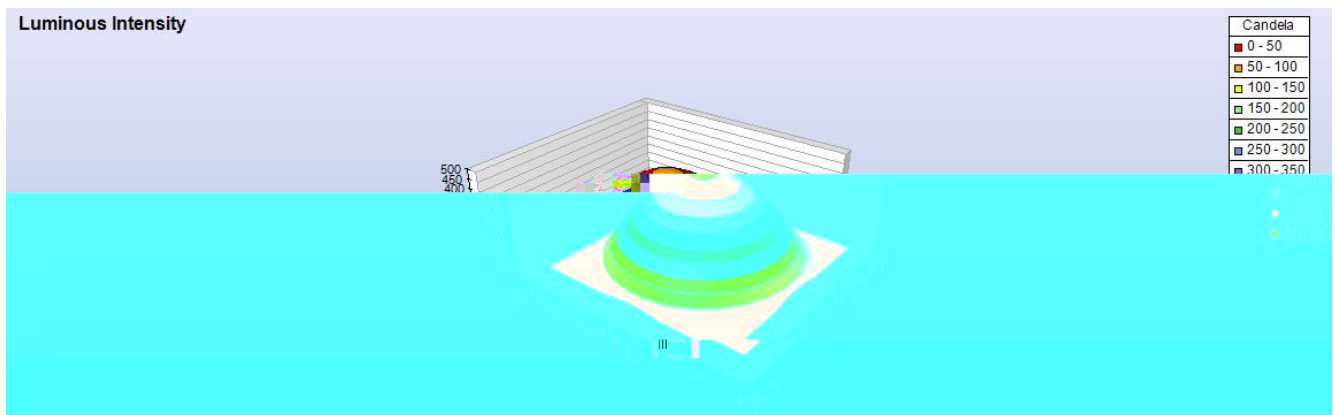
**Intensity(traced to infinity) Cross Section Luminous Intensity(Candela)**



**Intensity(traced to infinity) Iso-Plot**



**Intensity(traced to infinity) 3D Iso-Plot**

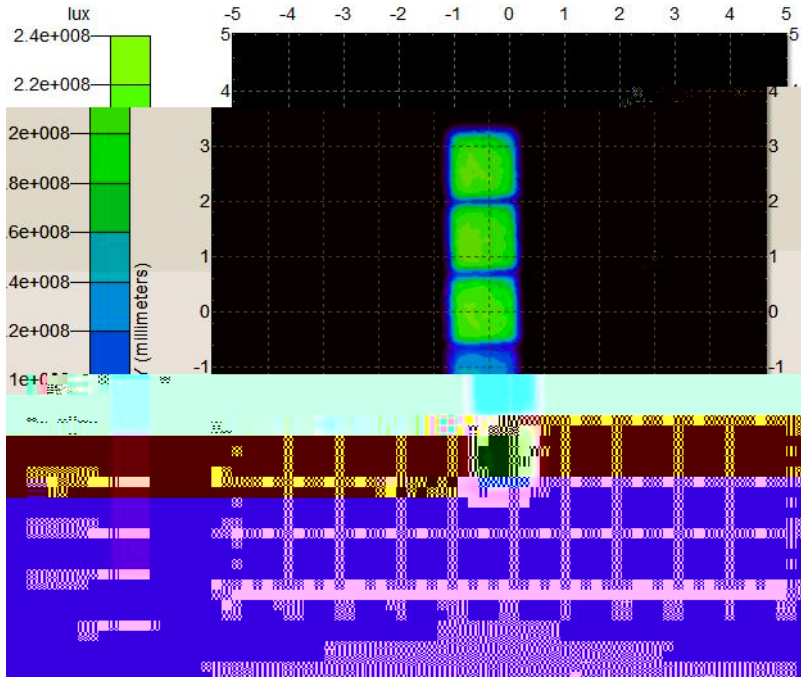


**Illuminance Distribution Diagram**

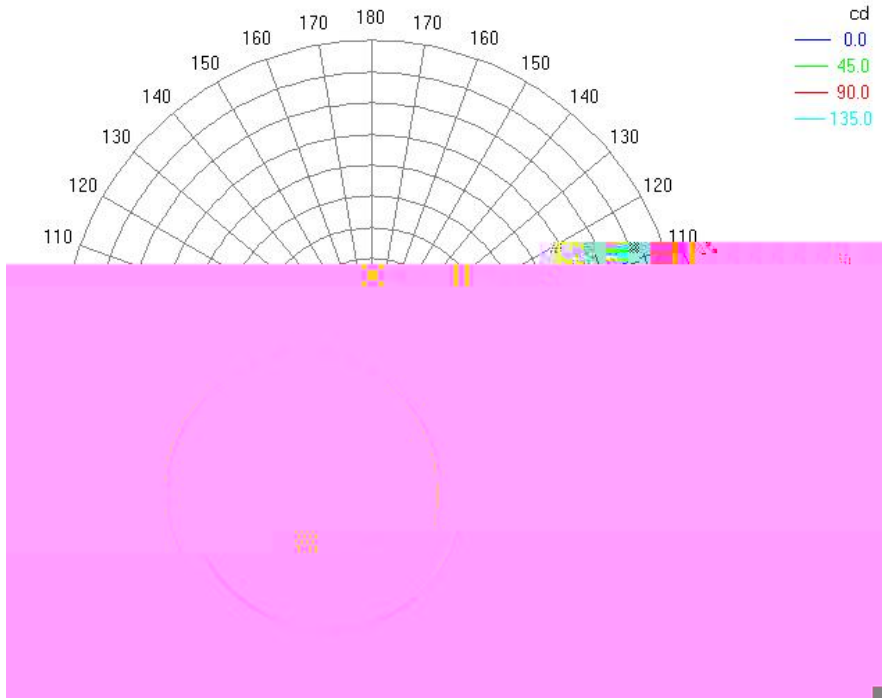

**Illuminance Distribution Diagram**



Total - Illuminance Map for Incident Flux  
Block 1 Surface 1 Global Coordinates



Polar Candela Distribution Plot  
Using Missed Rays



-----END-----